

Quick Christmas Gift Ideas

Towel Topper



Pellon
Sew-In Interfacing

APPAREL
SEW-IN
MACHINE SAFE
BEST VALUE

Sew-In Interfacing
LIGHTWEIGHT INTERFACING
for light to midweight fabrics

EASY SEW-IN APPLICATION

Great for Use in:

- Blouses and dresses
- Collars, cuffs and plackets
- Men's sportswear
- Quilts and crafting projects

www.PellonProjects.com





Sew Around leaving long end open



Clip inside corners and trim outside corners



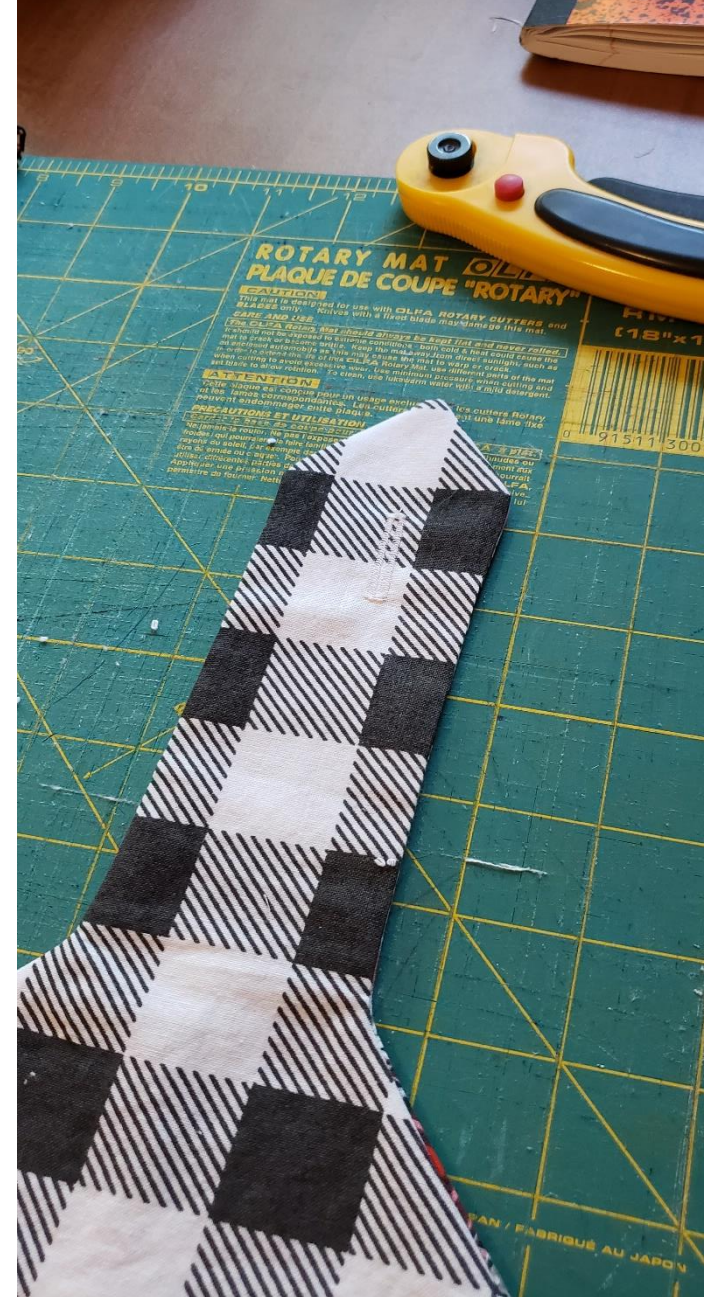
- Turn and press under 1 inch at opening.



Completed topper
section to sew towel
to by sliding towel up
in opening



Buttonhole added
Can use snaps or
Velcro to secure the
towel to a handle or
bar



Two rows of stitching for
strength and button sewn
in position



Completed towel



Two pattern pieces
taped together



Hanging dishtowel pattern

To make two hanging dishtowels, I used one purchased 24" x 15" dishtowel, 2 pieces of 7" x 12" fabric, one piece of 7" x 12" flannel, and two buttons.

Don't forget to pre-wash and dry everything to pre-shrink it!

Preparing the dishtowel:

1. Cut your purchased dishtowel in half so there are two 12" x 15" pieces.
2. Carefully pleat, fold, or gather the 15" raw edge so that it measures 6" across. Stitch pleats, folds, or gathers in place.

To make the handles:

1. Print out the pattern pieces and cut them out.
2. Overlap the TABs and glue or tape the pieces together.
3. Use the pattern to cut out four pieces of fabric and two pieces of flannel.
4. Pin the pieces together in this order: one piece of fabric, right-side up; one piece of fabric, right-side down; one piece of flannel. (Do this twice since you are making two handles.)
5. Starting at point A, stitch around the handle to point B, leaving the bottom open. Clip the corners and turn right-side out.
6. Press so that all the edges are crisp, then turn in a one-inch hem along the open bottom and press.

Assemble and finish:

1. Insert the raw pleated/folded/gathered edge of the dishtowel into the open side of the handle so that it lays a full inch inside. Sew at least two rows of stitches to hold it in place. (Remember that people will be tugging on this as it hangs in the kitchen so it must be well-stitched!)
2. Center your button on the pointed flap (point C) and mark lines for the buttonhole. Make the buttonhole on the flap.
3. Fold the flap over so the point lines up with the bottom edge of the wide base of the handle. Use a pin or mark with pencil where the button should go on the wide base and sew on the button.
4. Fini! Hang your dishtowel and admire.
5. Wash your hands - it's flu season!

You could use a snap or velcro if you don't like to make buttonholes. It would be cute to use coordinating fabrics on the front and back of the handle, so when you fold it over, you see both fabrics. A scrappy handle would be sweet as well.

© 2010 by Mara Drogan

<http://kleiosbelly.wordpress.com>

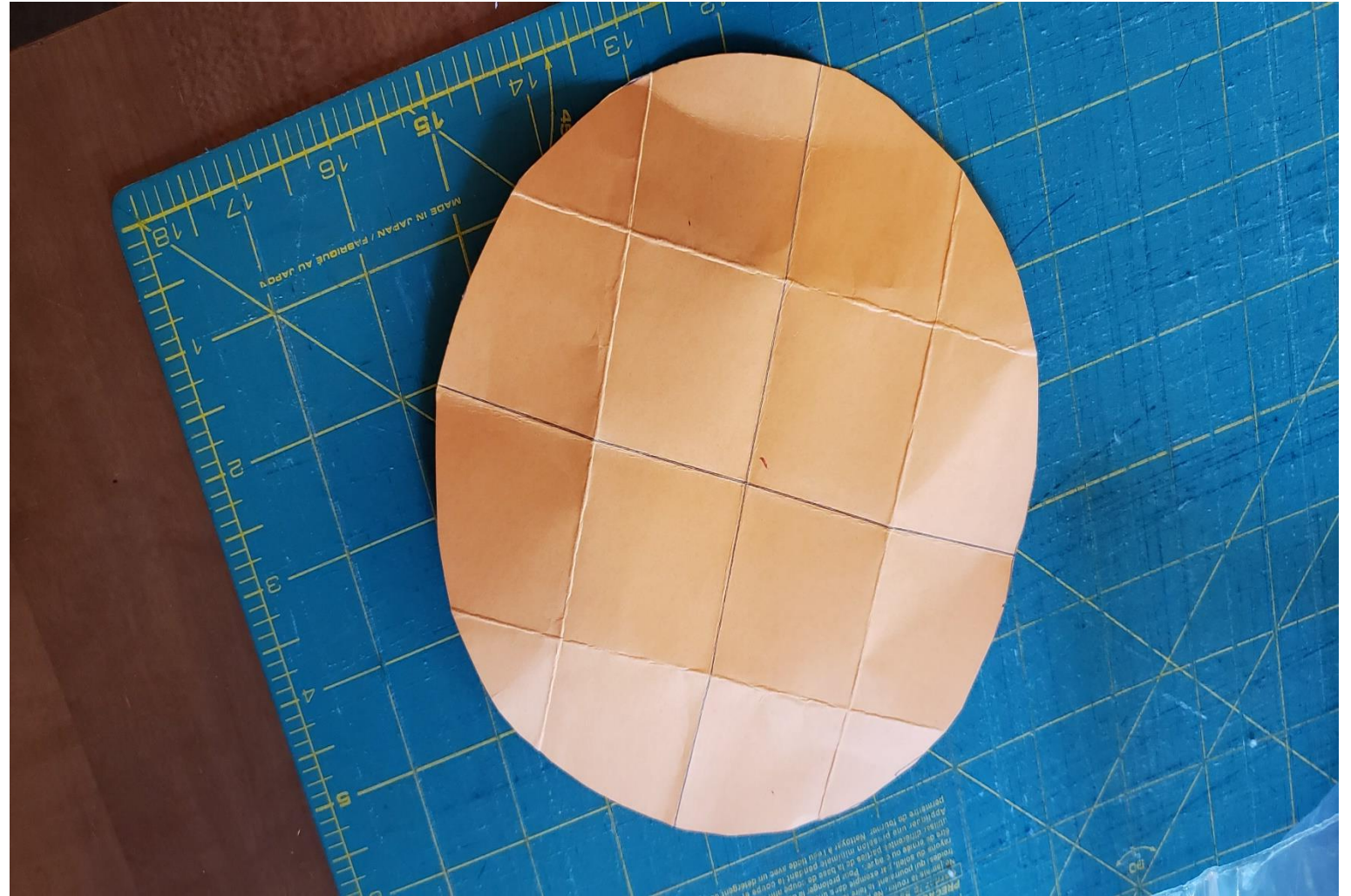
This pattern is copyrighted, but feel free to sell any hanging dishtowels you make from it! Just send me a picture so I can see your handiwork!

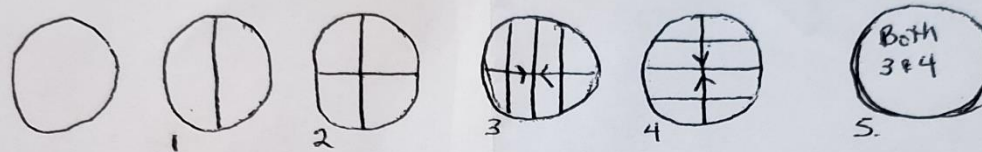


Christmas Ornament



Fold pattern
in these
directions





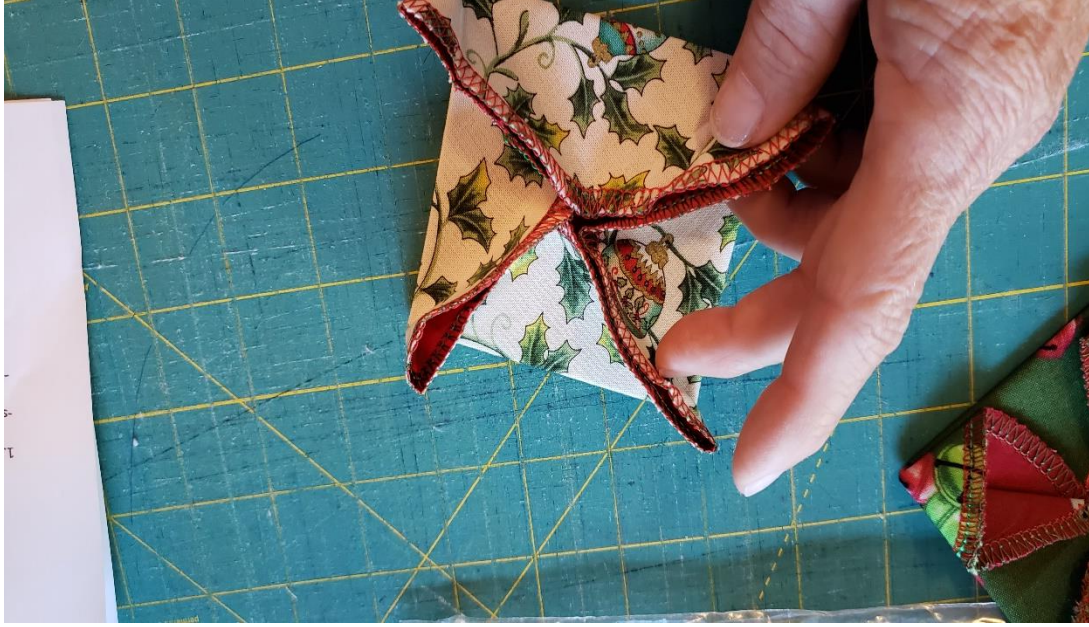
Ornament Directions

1. Combine two complimentary fabrics in any size circle in one of two ways
 - sew right sides together leaving an opening to turn
 - place wrong sides together and serge edges using pretty threads
2. Fold and press in all of the directions above
3. Bring all four fold together in the center folding over the corners
4. Press and secure with needle and thread or glue gun
5. Button can be sewed on or glued on
6. Thread gold thread through the fabric in a corner to create a hanger













Tree Christmas Ornament

Five squares of decreasing size.

Two squares sewn with right sides together and turn out and top stitched.

A cut out piece for the trunk added to lower square. I choose to attach when sewing on lower button.



Ribbon sewn on
to top square

Back side view
of attaching
squares
together.







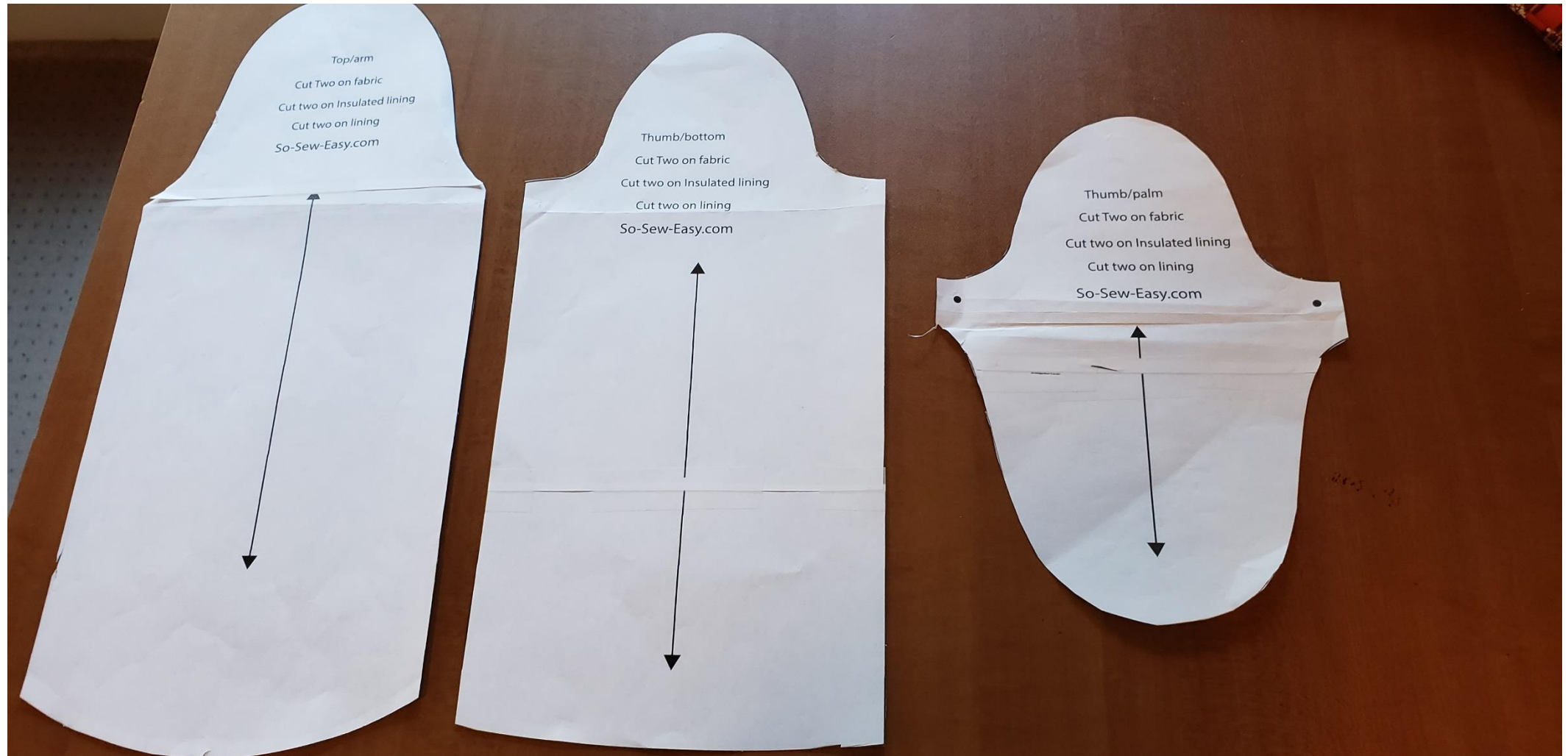
Cette plaque est conçue pour un usage exclusif avec les couteaux Royce
et les lames correspondantes. Les couteaux qui utilisent une lame fixe
peuvent endommager cette plaque.
CAUTIONS ET UTILISATION
Le base de coupe pour couteaux Royce CLFA à plat.
à rouler. Ne pas l'exposer à des températures extrêmes (chaudes ou
froides). Ne pas l'utiliser pour couper des objets durs ou
perforants. Par exemple, ne pas l'utiliser pour couper des objets en
acier. Pour prolonger la durée utile de la base de coupe CLFA,
éviter de la laisser dans une zone humide ou d'exposer à une
eau. Pour nettoyer, utiliser un chiffon doux et humide.
Ne pas utiliser de produits abrasifs ou de produits
chimiques. Ne pas utiliser de produits corrosifs.
Ne pas utiliser de produits inflammables.
Ne pas utiliser de produits volatils.
Ne pas utiliser de produits toxiques.
Ne pas utiliser de produits dangereux.



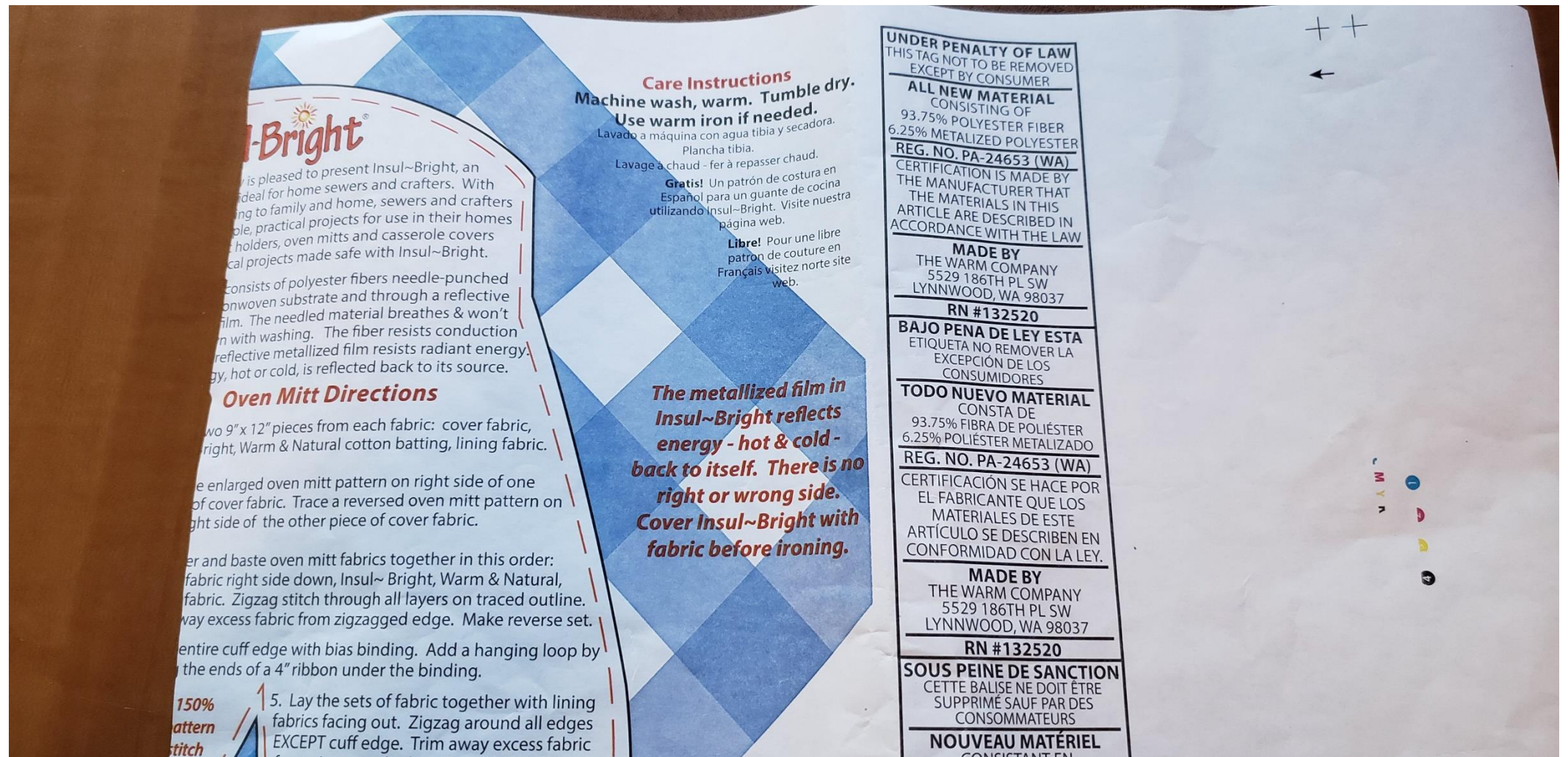


Mitten pot holder

Three pattern pieces used



Insul-bright information



Inside layer that has
thin batting
attached.



Turning the sewn
outside layer



Black foldover elastic
for top edge of glove







Fabric Weights

Never seem to have enough weights



Fabric circle and interfacing and washers used



Glue gun the washers together place in
center of fabric



Glue gun the fabric down and adorn with button and bows



Christmas cloth bucket – no pattern



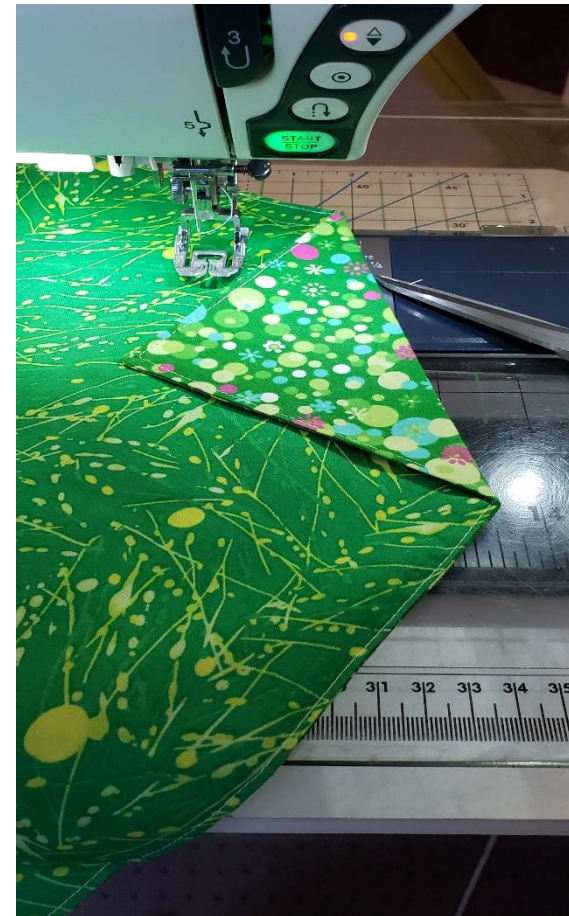
Fabric gift wrap

Two squares of coordinating fabric right sides together



Sew together squares leaving an opening to turn and top stitch

Fold over the corners a determined amount for your size and stitch across the corners to make a channel for ribbon

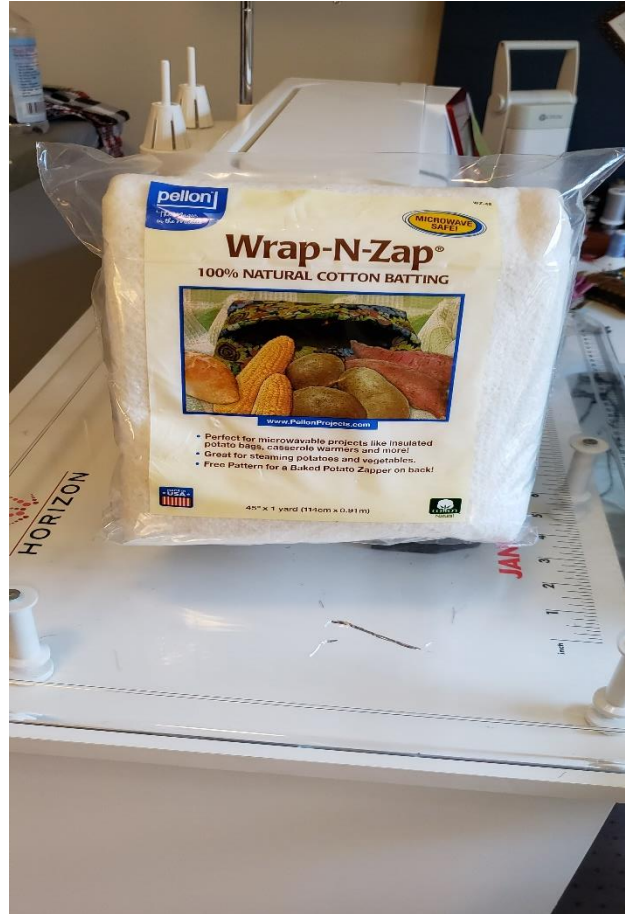


Corner channels sewn and ribbon slipped
thru them



Thread ribbon thru channel and pull up to tie





- Any item that goes in microwave needs to be all cotton and use this kind of batting

The End